

VOLUME 4 - 2007

SLIP JOINT WASHER

- CARTON QUANTITIES ONLY

PART NO.	NUT x TUBE	CTN. QTY.
SQUARE CUT RUBBER		
T79-125	1 1/4" x 1 1/4"	100
T79-150	1 1/2" x 1 1/2"	100
T79-151	1 1/2" x 1 1/4"	100
T79-200	2" x 2"	100
T79-201	2" x 1 1/2"	100
POLY BEVELED		
T80-125	1 1/4" x 1 1/4"	100
T80-150	1 1/2" x 1 1/2"	100
T80-151	1 1/2" x 1 1/4"	100
T80-200	2" x 2"	100



T79 SERIES



T80 SERIES

SLIP JOINT NUT AND WASHER

- Chrome plated nut packed with square cut rubber washer
- CARTON QUANTITIES ONLY

PART NO.	DESCRIPTION	CTN. QTY.
DIE CAST NUT		
T77-014	1 1/4" x 1 1/4"	25
T77-012	1 1/2" x 1 1/2"	25
T77-013	1 1/2" x 1 1/4"	25
T77-020	2" x 2"	25
BRASS NUT		
T78-014	1 1/4" x 1 1/4"	25
T78-012	1 1/2" x 1 1/2"	25
T78-013	1 1/2" x 1 1/4"	25
T78-020	2" x 2"	25



DIE CAST NUT



BRASS NUT

CONE SLIP JOINT WASHER

- Black
- CARTON QUANTITIES ONLY

PART NO.	NUT	TUBE	OD x ID	CTN. QTY.
T85-050	1/2"	3/8"	23/32" x 3/8"	100
T85-051	1/2"	3/8" threaded	23/32" x 3/8"	100
T85-052	1/2"	7/16" or 1/2"	5/8" x 7/16"	100
T85-053	Ballcock supply	-	3/4" x 7/16"	100
T85-054	Ballcock supply	-	13/16" x 11/32"	100
T85-055	Upper bath supply	-	27/32" x 7/16"	100



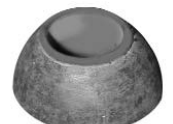
T85-052



T85-053



T85-054



T85-055

HOME WASHER KIT

- Screws and washers for faucet repair

PART NO.	DESCRIPTION	CTN. QTY.
J40-155	Home Washer Kit	1



B